

MILANO FAMILY
GIFTS 22 ACRES PAGE 13

PennDulum

A Magazine for Alumni and Friends of Central Penn College

September 2015

IT'S A
WORLD
small



AFTER ALL

Central Penn College Education Foundation:

EXECUTIVE DIRECTOR
Matt Lane

ASSOCIATE DIRECTOR
Sandra Box

Central Penn Alumni Association:

PRESIDENT
Joan Hassinger '06

VICE PRESIDENT
Michelle Meiser '93, '12

TREASURER
Daneen Collier '10

CENTRAL PENN ALUMNI ASSOCIATION DIRECTOR
Sarah Blumenschein



PRESIDENT
Dr. Karen M. Scoloro

EDITORS
Sarah Blumenschein
Mary Wetzel

PROJECT MANAGER
Kristi Castanzo

CONTRIBUTING WRITERS
Lezli Austen
Patricia Brosious
Linda Buffington '12

COVER PHOTO CREDIT
Danielle James

LAYOUT & DESIGN
Tom Castanzo
Afire Creative Group
www.afirecg.com
717.512.0094

Address questions or comments to:

Editor, *PennDulum*
Central Penn College
600 Valley Road • P.O. Box 309
Summerdale, Pennsylvania 17093

Email: letusknow@centralpenn.edu
or alum@centralpenn.edu

1.800.759.2727 ext. 2263 | www.centralpenn.edu

4 It's a Small World After All	18 Campus News
8 Commencement 2015	20 Photo Gallery
10 Academic Update	22 Alumni Engagement
11 College Corner	24 Class Notes
12 Education Foundation	33 Calendar
16 Six Degrees of Central Penn	34 Alumni Eternal

***PennDulum* Mission Statement**

The mission of *PennDulum* is to help Central Penn graduates stay connected with their alma mater, present opportunities for alumni, friends and community members to assist current and future students, and to share ways that readers can get involved in the life of Central Penn College.



Dear alumni and friends,

As I think of my milestone moments over the past few months, there are three that stand high above the rest—Central Penn’s commencement ceremony, my daughter Kate’s law school graduation and my daughter Danielle’s wedding.

I have now had the pleasure to be part of two Central Penn College commencement ceremonies celebrating our brilliant and hardworking graduates (see page 8). As a member of the party that sits on the stage in the Forum, I have the unique opportunity to sit face-to-face with our graduates. This year I saw the sheer delight, hope and pride on the faces of our new alumni as they moved the tassels on their caps from right to left. I saw the relief that often comes along with achieving such a monumental goal. Above all things, it is with great humility that I realize I have the good fortune to witness these personal moments ... these milestone moments of Central Penn College graduates.

An exceedingly personal milestone moment for me as a mother was my daughter Kate’s graduation from Quinnipiac University School of Law, on Mother’s Day no less! My family also celebrated the union of my daughter, Danielle, to her new husband, Dalton. It is with great joy that I officially welcomed Dalton into my family, and I am so pleased that my daughter has found such a kind, talented, intelligent and committed man for her husband.

I would love to hear your milestone moments and what you have been celebrating, whether it is a career change, promotion, completion of an advanced degree, wedding or new addition to the family. Please drop us a note via our Let Us Know! form on centralpenn.edu/alumni. It is through these forms that we identify graduates to recognize in Class Notes, feature stories, advertisements, the alumni mentor program and more.

So as we anticipate your updates, please enjoy reading the achievements of your fellow graduates working internationally in this edition’s cover story (page 4). I look forward to reading about you and your accomplishments in the near future.

Respectfully,

A handwritten signature in black ink that reads "Dr. Karen M. Scolforo". The signature is written in a cursive, flowing style.

Dr. Karen M. Scolforo
Central Penn College President

**MILESTONE
MOMENT?**

Let us know!

[centralpenn.edu/
letusknow](http://centralpenn.edu/letusknow)



IT'S A
small **WORLD**
AFTER ALL



Building a
GLOBAL
community

By Patricia Brosious

Central Penn's
ROMEO AZONDEKON
helps international
students cross
cultures



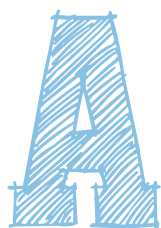


It's a world of laughter, a world of tears
It's a world of hopes and a world of fears



There's so much that we share that it's time we're aware

It's a small world after all. 



catchy childhood song for many is now a reality at Central Penn College. In an effort to grow the college, enrich it through diversity and provide an educational

opportunity to students from other countries, Central Penn is actively recruiting international students.

Central Penn graduates Karen Printzenhoff and Andy Shaffer currently work internationally and are enthusiastic that the college is exposing its students to a global environment.

"You can go anywhere and do anything."

Karen Printzenhoff '84, travel and tourism, exclaims, "Good for Central Penn! It's a win-win situation for both sides. Work environments have not been local for years. We've definitely gone global."

Printzenhoff works as quality assurance release manager for Sabre Pacific in Sydney, Australia. But she didn't always have a worldwide view. Printzenhoff was raised in historic Picture Rocks, Pa. (latest census population: 693!), in Lycoming County, far in every way from the city life she now enjoys.

After graduating from Hughesville High School, Printzenhoff began her travel education elsewhere before deciding that Central Penn's travel major offered studies using Global Distribution System (GDS), a computer program used by travel agents to make reservations directly through the databases of airlines, hotels, car

rental agencies and other travel vendors. Printzenhoff quickly transferred to Central Penn, graduating in December of 1984. She has enjoyed work in the travel industry since her graduation.

Printzenhoff was always interested in the information technology side of the industry so she continued her education to learn that piece of the business. She enrolled in Misericordia University in Dallas, Pa., to earn her bachelor's degree in management information systems.

Printzenhoff lived in several locations over the years, including Greece, a place where friends remain. In 2007, Travelocity offered her a job in Sydney. Soon after she began her new position, the company closed its office in Sydney. Fortunately, Sabre Pacific, Travelocity's sister company, offered her a management position.

Sabre Pacific is a leading supplier of technology to the travel industry in the South Pacific region. The Sabre GDS links approximately 350,000 travel agents with more than 400 airlines, 125,000 hotels, 25 car rental brands and 13 cruise lines.

Printzenhoff doesn't have plans to return to the United States anytime soon. Her employer sponsored Printzenhoff for permanent residency, managing the legal process that led to her Australian citizenship. Fortunately, Printzenhoff did not need to give up her U.S. citizenship, and she now has dual citizenship in the U.S. and Australia.

Printzenhoff flies home for a few months each year, taking advantage of her ability to work remotely on her computer. After spending a lengthy visit in Pennsylvania with family this summer, Printzenhoff flew to Orlando, Florida, then Greece and on to South

Africa to attend a wedding before returning to Sydney.

She is pleased that Central Penn is bringing more diversity into central Pennsylvania.

"Often I am asked about the Australian people and I tell them that I work with only about two Australians," Printzenhoff says. "Sydney is like New York City—a diverse, cultural melting pot. I tell others, 'You can go anywhere and do anything.'"

Getting out of your comfort zone

Andy Shaffer '07, B.S. information technology, was excited to learn about Central Penn's global initiatives. He explains, "I believe this is a great start that can give internationals a better insight of life in America and of course helps them feel accepted and comfortable. Not only does Central Penn's cultural diversity center help internationals, but it also can give American students a better insight on international life."

Just recently, Shaffer has accepted a position at the company Irdeto as a senior windows engineer, and is excited for the next step in his career.

"I will be responsible for many Microsoft technologies, including window servers and directory services," explains Shaffer. "My job will also involve managing VMware environments. Lastly, the company is moving more to cloud services, which will allow me to learn more about Windows Azure and Amazon cloud services."

Shaffer is currently systems engineer for TMF Group, a large, multinational



financial company. His job is complex and ever-changing. Shaffer functions as global directory services team leader, managing five colleagues. In addition, he supports datacenters, windows servers, storage technologies and VMware, cloud infrastructure.

Based in Amsterdam, Netherlands, Shaffer is no stranger to world travel, taking on international special projects. Most recently, he was busy with the support and configuration of four new shared datacenters. Two were based in France, one in Singapore and the fourth in Costa Rica.

This level of expertise and leadership should come as no surprise to Shaffer's Central Penn professors. He received the student of the year award for the information technology major during his commencement.

Shaffer enjoys the more relaxed work atmosphere in the Netherlands. He explains, "The Dutch tend to work hard in the office but, when the end of the day comes, they put their work aside and enjoy family, friends, sports or relaxation."

Adjusting to a different communication style at work took some time. "If the Dutch do not like something or do not agree, they generally do not think before communicating. They say what they think; however, their honesty can be refreshing. This takes some getting used to, but today I find myself doing the same."

Shaffer finds work benefits to be generous. New employees receive 25 vacation days, frequently coupled with yearly or even permanent contracts, conditional on quality work.

It wasn't a career opportunity but an attractive young woman that inspired Shaffer's move to the Netherlands.

Shaffer laughs, "During my time at Central Penn, I met my wife, a Dutch girl named Miriam, through a friend while she was visiting the United States. While we both were studying, we held a long distance relationship. After I graduated from Central Penn, I packed my bags and moved to the Netherlands for my career and, of course, to propose and get married."

They now have a one-year-old daughter, Rose-Marie, they adore.

Like Karen Printzenhoff, Shaffer sought citizenship in his adopted land, becoming a dual citizen of Holland and the U.S. in 2014. Also like Printzenhoff, Shaffer hailed from a small town, graduating in a class of six from Northumberland Christian School in 2004. He looks forward to multi-week stays with his family in Middleburg, Pa., visiting every two years.

Shaffer adds, "The Netherlands is very densely populated with no mountains, so I miss the quietness and beauty of living in the countryside of Pennsylvania."

Shaffer welcomes international students to Central Penn.

"Living abroad, I have seen many misguided opinions and ideas about other people, cultures and countries because these people did not have their own experiences," says Shaffer. "It's called education and Central Penn's international involvement helps students to think outside the box and get out of their comfort zones."



Andy Shaffer '07 with his wife, Miriam, and daughter, Rose-Marie, in Alphen aan den Rijn, the Netherlands

Growing globally

To reach the college's goal of increasing international enrollment, Central Penn established two new career positions at the college within the past year.

The first, cultural diversity director, held by Romeo Azondekon, reports to the dean of student affairs, supports international students after their arrival on campus and provides multicultural events to all students. The second, international recruitment director, filled by Danielle James, is part of the college's admissions team and works to enroll new international students.

This talented team brings a combination of youthful energy, incredible focus and strong relationship skills to recruit and support international students. When they talk about "partnerships" and "collaborations" with outsiders to do their jobs, in reality, it's their warm personalities that create "friendships" and "camaraderie" among those working in the same field.

As a result, a lot has happened in just one year.

Cross culture

Romeo Azondekon's office is an open door to international students. Student programming is a major responsibility of the cultural diversity center. Azondekon established the international society club, which has a crowded calendar of activities. Azondekon also is pleased with the students' involvement, citing the student-run "Cross Culture" blog as just one example.

While planning cultural events involving music and dance to speakers' series on educational topics such as Women in Islam, Azondekon makes connections throughout the region to make all students feel included and valued. One of his closest partners is HACC, as they plan joint events, such as the spring bus trip to the United Nations, open to students from both colleges.

In addition, as the college's immigration official, Azondekon meets bi-weekly with international students to review their ongoing F1 Visa requirements, such as their enrollment status and out-of-state travel and visitor guidelines. He also helps international students with cultural adjustment and academic needs.

Azondekon is uniquely qualified to handle the dual responsibilities of multicultural programming and international student services. He recently was accepted by a unanimous vote to join the board of the World Affairs Council of Harrisburg.

"I look forward to representing my institution and community, and fostering solutions for big problems," says Azondekon.

His bachelor's and master's degrees prepared him for school counseling with an emphasis in higher education. As a five-year-old, Azondekon relocated to Philadelphia as a refugee

from West Africa. His passion is working with first-generation college students, as he was. He first came to Central Penn as an academic advisor in 2011 and transitioned in spring of 2014 as head of the newly-founded cultural diversity center.

Recently, Central Penn's popular cultural immersion program—or study abroad program—has been placed within the cultural diversity center. When asked if the college planned to expand his office, Azondekon laughs, "I hope so!"

Azondekon's hard work for international students is much appreciated.

As accounting student Jelena Simic from Bosnia says, "The diversity center made the transition from my home country to the United States and a different education system much easier. The diversity center and Romeo make me feel like I always have someone at Central Penn that I can rely on, which makes my experience here even more wonderful."

Building relationships from afar

Working at her stand-up desk ("I feel much more energized at the end of the day," James explains), Danielle James researches what global locations are a good fit for Central Penn. She pores over documents filled with statistics.

What countries have high school students who want to attend college in the United States? Who has the financial means to be educated here? What countries have students who are fluent in English?

The shelves in James' office hold bulging binders identified by country: Myanmar, Singapore, Thailand, Vietnam, Malaysia, Indonesia, Taiwan, Hong Kong, South Korea and Australia. Why is the emphasis on Southeast Asia? Colleges and universities are few and far between in these countries. In fact, Myanmar has none. Considering that the United States is recognized as having the best higher education system in the world, many look to study in this country.

James expects to be out of the country for three months a year. While the number one perk of the position is building relationships with prospective students, James enjoys new environments, cultures and climates. These travel experiences make James feel very blessed to be an American. "Our high standard of living, including access to free education until college, cannot be taken for granted."



International Recruitment Director Danielle James represents Central Penn in Seoul, South Korea with her interpreter, Kevin



There is just one moon and one golden sun
 And a smile means friendship to everyone
 Though the mountains divide and the oceans are wide
 It's a small world after all.



COMMENCEMENT 2015

By Christine Tobias

It may not have been the sunniest of days, but plenty of excitement still shone in the Forum during Central Penn College's 133rd commencement ceremony on May 1.

Dr. Karen M. Scolforo, president of Central Penn College, opened the festivities by imparting some words of wisdom from her late father, as well as her own advice.

"There is no disgrace in failing when you've done your best to succeed. Give yourself a break. Embrace your mistakes, learn from them," Scolforo said. "Recognize the rollercoaster. For every action there is an equal and opposite reaction. For every high there is an equal and opposite low. Life is rarely a calm and even ride. If you are on a high don't expect it to last forever. But if you're on the downside, know you are on your way up."

Commencement speaker Dennis Owens, a 22-year veteran reporter and anchor at abc27, regaled the audience, not only with his words of encouragement, but also with song, breaking out into a rendition of "The Best is Yet to Come" by Frank Sinatra. Owens also tweeted out a picture of the class of 2015 with the caption, "Central Penn College Class of 2015. Hire Us." But he wasn't only an entertaining speaker; Owens also imparted several pieces of advice for students.

"There is no disgrace in failing when you've done your best to succeed. Give yourself a break. Embrace your mistakes, learn from them." —DR. KAREN M. SCOLFORO



Student Government Association President Madison Foley delivers her commencement address.



Students of all ages gather to celebrate their hard work and accomplishments.

"Success takes many paths," he said. "We need to be open to those different paths."

Some of the highlights from the 2015 commencement ceremony included: The first cohort in the Master of Professional Studies program participating in a hooding ceremony, signifying the completion of their graduate level studies. This year the college conferred two honorary doctorate degrees—first to Sister Romaine Niemeyer, chief administrative officer of Holy Spirit Health Systems; chosen for her amazing servant leadership and longstanding commitment to healthcare in our local community and beyond. The second honorary degree was bestowed to Rachel Jones-Williams, a Central Penn College part-time professor who passed away in 2013. Jones-Williams taught African-American studies and sociology and humanities. She was an inspiration to her students and colleagues. One of her many accomplishments was creating the first exhibit at the Pennsylvania State Museum to honor the legacy of African Americans in Pennsylvania history.

Student awards:

- Legacy Award for Perseverance to **Amanda Rodriguez '15**, B.S. in legal studies
- Student Leadership Award to **Madison Foley '15**, A.S. in paralegal
- Student Service Award to **Liandra Jackson '15**, B.S. in legal studies
- Academic Excellence Award (associate degree) to **Amber Ferree '15**, A.A.S. in occupational therapy assistant
- Academic Excellence Award (bachelor's degree) to **Jonathan Leib '15**, B.S. in information technology—networking and security



abc27 Anchor and Reporter Dennis Owens tweets a picture of the class of 2015 during his commencement speech.

STUDENT BATTLES BACK TO EARN DEGREE

Dedicated to Specialist Brian Ritzberg

By Christine Tobias

Sean T. Copper first attended classes at Central Penn in 2005, but due to circumstances outside his control he had to leave the college. However, he promised himself he would finish his degree.

Shortly afterwards, Copper joined the Army and in 2007 he began his first tour of duty in Kirkuk, Iraq. During his fifteen months serving in Iraq, Copper lost his friend and fellow soldier Specialist Brian Ritzberg to an IED attack.

In 2010, Copper was deployed for his second tour of duty in Kandahar, Afghanistan. While on patrol his M-ATV rolled into a ditch, crushing his right hand. He was flown to Bagram, Afghanistan, but the base came under attack for several hours, preventing Copper from being flown to the care he needed. Due to the delay, Copper's right middle finger was amputated. After returning to the U.S. he was diagnosed with severe post-traumatic stress disorder. It took two years to regain eighty percent control of his right hand. Copper credits his ability to move his fingers to his wife, who refused to feel sorry for him and encouraged him at every turn.

Ten years after leaving Central Penn College, Copper walked across the Forum stage to receive his Bachelor of Science in Business Administration with a concentration in management.

"I never quit fighting to achieve my goals, because it's what Ritzberg would have wanted me to do," he says.

As for his future plans, Copper would like to either own a business or work for Central Penn as a career counselor.

"I believe in this college and I know the professors all have what it takes to provide students with the knowledge to become successful in life," says Copper.



Role model faculty

Dr. Debra Heath-Thornton, the new vice president of academic affairs, presented Associate Professor of English Matthew Vickless with the 2015 Todd A. Milano President Emeritus Faculty Excellence Award. Vickless embodies the student-centered approach to teaching and learning that Central Penn holds as the hallmark of the institution. Known for being empathetic, compassionate and reflective, many students described him as a "role model," "encouraging" and "positive." In honor of Vickless, a gift was made to the Central Penn College Education Foundation so that another generation of students could have the money to realize their potential.



Higher-level Health Care

by Christine Tobias

Beginning next month, Central Penn College will be offering three new bachelor's degrees from the School of Health Sciences, with a fourth new degree program following close behind in the winter of 2016. The Bachelors of Science in Health Science, Healthcare Management and Radiology Sciences were approved by the Pennsylvania Department of Education on April 20; the RN to BSN degree completion program was approved August 19.

The need for skilled medical professionals in all areas is expected to grow exponentially in the coming years due to several factors. The aging of the baby boomer generation is creating a need for higher level healthcare professionals as current workers approach retirement. In addition, the Affordable Care Act has caused an influx of those who could not afford regular medical treatment previously to flood the healthcare market place.

“Pennsylvania is already experiencing healthcare workforce shortages and could face even more shortages as older healthcare employees retire and younger workforce members relocate or change jobs, creating a greater demand for health care,” says Dr. Krista Wolfe, dean for the School of Health Sciences. “Central Penn College believes there is a substantial current and future need for physical therapists, occupational therapists and physician assistants to handle anticipated increases in the number of Pennsylvanians seeking medical attention. The predicted mass retirement of the baby boomers, along with the current shortage of healthcare practitioners and the resulting inadequacy in meeting the healthcare needs of the current population drove the college to expand our offerings in the health sciences in order to meet these demands.”

New Bachelor of Science Degrees:

Health Science – The program will prepare students for management, administrative or educational positions within the healthcare industry. Students also will be prepared to pursue higher academic goals as they will qualify for graduate-level healthcare education. The health science program will be offered in the traditional format with day classes on the Summerdale campus.

Healthcare Management – Students will be prepared to meet the demands of an ever-changing healthcare system. This is a degree completion program targeted at those already holding or pursuing an associate degree. The program will prepare students for management, administrative or educational positions within the industry. Students will develop and enhance leadership skills, learn to understand and apply business concepts to the healthcare industry and apply critical thinking skills in order to make informed business decisions. Students also will be prepared to pursue higher academic goals as they will qualify for graduate-level healthcare education.

Radiology Sciences – Targeted at medical imaging professionals credentialed and working in the field, this is

a transitional program intended to give professionals the opportunity to earn business and management education and skills. Students will expand their leadership skills to further their careers into supervisory positions, and will be prepared to pursue medical imaging education and higher-level imaging careers, such as registered radiologic assistant.

RN to BSN – This program will allow registered nurses holding an associate degree to further their education and career opportunities by earning a Bachelor of Science in Nursing. Increasingly, studies show baccalaureate level registered nurses achieve better patient outcomes than their associate level counterparts, including lower mortality rates. A report released in 2010 by the Institute of Medicine (IOM) called for an increase in nurses with a baccalaureate degree to 80 percent by 2020. As a result, many local hospitals are now seeking registered nurses holding higher degrees, with most hospitals requiring registered nurses without a bachelor's degree to enroll in a degree completion program shortly after being hired. This increased demand for bachelor's degree level nurses, not only in central Pennsylvania but also state-wide, prompted the college to add this degree completion program.

For more information, go to centralpenn.edu/shs.

Personal and Family Preparedness

By Sam Morgan, *Professor of Criminal Justice and Homeland Security Program Chair*, and Nikki Marhefka, *Medical Assisting Program Chair*



Ready for any emergency

Personal preparedness encompasses all of your family and individual activities, no matter where you are. These preparedness efforts are a team effort. The American Red Cross and Department of Homeland Security provide information and resources to help you better prepare for the possibility of an emergency or disaster. What you do now can help you and your families better respond to and recover from a natural or human-made disaster, as well as contribute to the overall readiness of your neighborhood. These simple steps will help you be better prepared if a serious event takes place:

Be informed: Knowing what to do before, during and after an emergency is a critical part of being prepared and may make all the difference when seconds count.

Make a plan: Your family may not be together when a disaster strikes so it is important to plan in advance: how you will get to a safe place; how you will contact one another; how you will get back together; and what you will do in different situations.

Build a kit: You may need to survive on your own after an emergency. This means having your own food, water and other supplies in sufficient quantity to last for at least 72 hours.

Get involved: Individuals and community organizations can get involved to help communities lessen, prepare for, respond to and recover from disasters.

(Source: Fema.gov)

Additional resources can be found at:

Fema.gov, RedCross.org, DHS.gov

Make a plan, before you need a plan. Your plan does not have to be the very best; you simply need to have one. Fundamental to coping with a serious event is pre-planning, staying mentally focused on immediate needs and execution of your own personal plan.

Sam Morgan '05, B.S. in criminal justice administration, is a professor of criminal justice and homeland security program chair in the School of Legal Studies. With more than 30 years of law enforcement, corrections and military experience, Morgan has been a two-time homeland security presenter at the Naval Post Graduate School in Monterey, Cal.

Your personal health

If you have the opportunity to use an electronic personal health record, do so. It is a way to organize up-to-date records of essential personal health information where it is readily available anywhere. The information included would be your medical history (medications, included) and family medical history all in one place. The personal health record can be stored on a CD or, even more accessible, on a website or through an insurance or healthcare provider's patient portal. This information can be shared electronically with healthcare providers if the need arises. In an emergency, your health records can be electronically available at any time and at any location.

You can also donate blood through the American Red Cross or your local blood bank at a blood drive or donor center. You can help your community to be prepared. Science has found no substitute for human blood, so a good supply is needed at all times. Central Penn College helps with emergency preparedness in this way. Three times a year, a blood drive is coordinated with the Central Pennsylvania Blood Bank. The college staff, faculty and students help to keep blood products available for emergencies.

Be able to help out in an emergency by taking first aid or CPR courses from the American Red Cross or American Heart Association. The training can help your family or your community by saving a life, limiting pain and suffering, or with a better recovery. There are many courses available through these organizations and local communities.

Emergency preparedness is everyone's responsibility.

<http://www.medfusion.net/ihealthrecord/> iHealthRecord (iHealthRecord)

<https://familyhistory.hhs.gov/> (My Family Health Tool)

Nikki Marhefka, EdM, MT(ASCP), CMA(AAMA) is the program director of the medical assisting program at Central Penn College. She has been teaching in medical assisting programs for 20 years and has been a contributing author for medical laboratory textbooks. Her bachelor's degree is in medical technology and her master's degree is in educational psychology.

College Corner provides you with expert insights from Central Penn faculty and staff.

Stabler Foundation Dignitaries Visit the New Donald B. and Dorothy L. Stabler Health Sciences Building

Stabler Foundation board members **Cyril Dunmire, Jr.** and **Sheril Moyer, Esq.** joined Stabler Foundation Executive Director **Larry Hartman** on April 16 to tour the newest construction project on campus, the Donald B. and Dorothy L. Stabler Health Sciences Building.

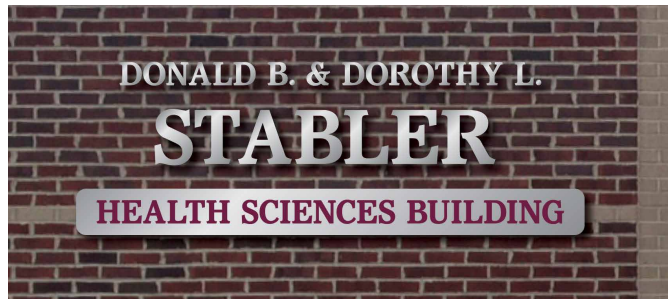
College President **Dr. Karen M. Scolforo** and Dean of Health Sciences **Dr. Krista Wolfe** led a presentation that focused on Central Penn's growing health science programs and the college's appreciation of scholarship donors who make a Central Penn education possible for many.

The Stabler Foundation leads the way in providing scholarship funds to Central Penn students. Since 2008, Stabler Foundation has given the education foundation \$1.72 million, which translates to opportunities for countless Central Penn students.

Because of the Stabler Foundation's extraordinary generosity, Central Penn honors the late Donald B. and Dorothy L. Stabler with name recognition on this important new building along Valley Road.

Matt Lane, executive director of the Central Penn College Education Foundation, is immensely grateful for the partnership with the Stabler Foundation.

He told the Stabler representatives, "I hope you enjoy your visit today and return in the fall to see students in action in



the new Donald B. and Dorothy L. Stabler Health Sciences Building. I will do whatever is possible to honor their extraordinary legacy at Central Penn College."

Donald Stabler was chairman of the board of Stabler Companies Inc., a Harrisburg-based holding company with ten subsidiaries, most related to highway construction. Stabler passed away in 1997 while his wife died in 2005. Through their foundation, the Stablers continue to support hundreds of organizations in central and eastern Pennsylvania that fall within the principles outlined by Mr. and Mrs. Stabler.

The Stabler name on this prominent building has energized the *Changing the Landscape Campaign for Scholarships Phase 2: Health Sciences Building*.

Changing the Landscape Campaign for Scholarships Phase 2 Kicks Off

The ambitious campaign to raise \$750,000 began this winter with requests for scholarship giving in return for naming rights within the Donald B. and Dorothy L. Stabler Health Sciences Building.

So far, the report is good. As of June 30, a total of \$595,000 in cash and \$20,000 of in-kind gifts have been pledged. Nine rooms are reserved, but several naming opportunities remain.

In addition, the "We Care Club" is being offered for the first time to those who give within \$1,000 - \$2,499, with name recognition in the main corridor of this new building.

Please consider a pledge of up to three years to this campaign. Gifts of all sizes create a powerful, cumulative effect that will help reach this exciting goal for student scholarships.

For more information, visit www.centralpenn.edu/foundation (then choose the Changing the Landscape campaign on the left column) or contact Education Foundation Executive Director Matt Lane at **717-728-2263** or mattlane@centralpenn.edu.

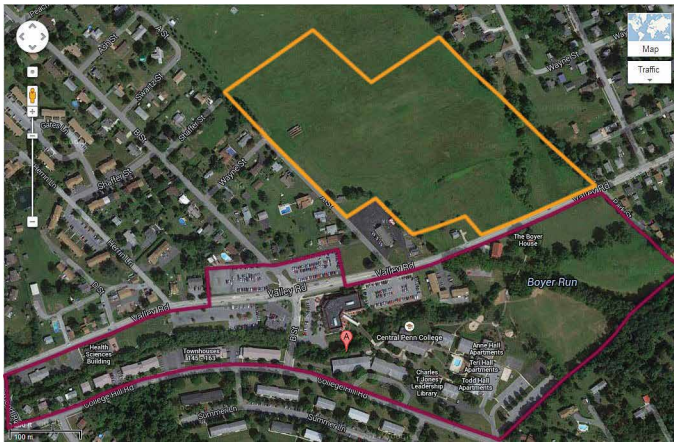
Milano Family Gifts 22 Acres

Land to be used for college growth and enhanced residence life

Linda (Meiller) Milano '78 and **Todd Milano**, president emeritus of Central Penn College, gifted 22 acres of land adjacent to Central Penn College to benefit the Central Penn College Education Foundation. The gift has made possible the creation of an endowed scholarship fund for deserving students; and the open acreage along Valley Road brings Central Penn's Summerdale campus to 58 acres.

Linda and Todd met at Central Penn nearly 40 years ago. According to the couple, now is the perfect time for them to give back to the institution that brought them together.

Linda, a 1978 legal secretarial alumna, notes that "The important part is not our act of giving, but rather that we can witness the benefits that emerge from the gift. This gift will result in the formation of a substantial endowment fund for scholarships, which will help dozens of students every year to stay in school in order to achieve their goals to earn college degrees, work in their chosen fields and become contributing members of society."



"It is our strong desire to see and support Central Penn's continued growth and the positive change it fosters in her students," says Todd. "We are proud to join the group of Central Penn's leading donors who we believe share a common thread: that through their gift they gain more than they gave."

According to Education Foundation Executive Director **Matt Lane**, "The structuring of this land gift will ultimately result in the largest single donation to scholarships from a graduate in the foundation's history. It is hard to find the words to express my deep gratitude."



Linda (Meiller) Milano '78 and Todd Milano, president emeritus of Central Penn College, with student scholarship recipients Alyssa Machmer and Danasia Taylor and Executive Director of the Central Penn College Education Foundation Matt Lane.

Students **Alyssa Machmer** and **Danasia Taylor** received the inaugural Linda '78 and Todd Milano "Keep Smiling" Legacy Scholarship, which was made possible by this donation.

Central Penn College President **Dr. Karen M. Scolforo** says, "The college's board of directors and I are so pleased with Linda and Todd's very generous gift. The timing is perfect. As part of our strategic planning process in 2015, we have identified six major areas of focus, including college growth and enhancing the student experience. It is incredibly important that we continue to make commitments to residence life and Central Penn's holistic education. One of the projects under serious consideration is to develop fields and facilities for our growing sports programs."

Under Scolforo's leadership, the athletic programs doubled from three sports to six, with the addition of men's and women's soccer and baseball to complement current programs of women's volleyball and men's and women's basketball. All sports are currently practiced and played on East Pennsboro School District sports facilities and Metro Bank Park (baseball). The college is a member of the United States Collegiate Athletic Association (USCAA).

Central Penn College Education Foundation

Fall 2014 and Spring 2015 Scholarships, \$183,800 Awarded

Endowed Scholarships

Abayasekara Family Endowed Scholarship

Kennisa Slade

Anonymous Endowed Scholarships

Barbi Abbe
Jeannie Acevedo
Dominique Brown
Ericka Brown
Leroy Campbell
Ellen Coleman
Gianna Devine
Emely Garcia
Teta Gaye
Snjezana Grbavac
Kelsey Hockenberry
Teresa Lebo
Natasha Lopez
Kahmal Moore
Heidi Rapp
Marvin Roberts
Tynesha Robinson
Amanda Rodriguez
Unique Rodriguez
Kaila Seigman
Jelena Simic
Kimberly Smith
Stacey Stewart
Tyree Tucker
Aaron Watson

Bailey Family Foundation Endowed Scholarship

Brittany DeArment
Ashley Lloyd
Myeshia McGhee
Sarah Rose
Murray Ruggiero
Caroline Weir

Bart and Jean Milano Endowed Scholarship

Daouda Bamba
Sommer Perez
Lora Petrova
Carol Torres-Reyes
Samantha Wagner

Byler Family Endowed Scholarship

Sean Copper
Breanna Ingram
Lenora Kaighn
Yelena Patrushev
Heidi Rapp
Unique Rodriguez
Kelly Stauffer
Keith Thomsen
Cody Zeiler

Capital BlueCross Endowed Scholarship

Nikeira Bland
Alexa Christman
Jennifer Rush

Charles "T" Jones Leadership Library Endowed Scholarship

Ericka Brown
Justin Cary
Chaneil Croxton
Kendra Elliott
Daron Johnson
Robert Kivlan
Jaida May-Woodfolk
Bryan Rivera
Raquan Smith
Anna Sykola

Craiger C. Parker "Rock Steady" Endowed Scholarship

Raquan Smith

Daryl and Dennis Kenes Endowed Scholarship

Conner Arnold
Shenise Wilkins

Derek Hathaway Leadership in Business Endowed Scholarship

Stephen Suchanick

Donald B. and Dorothy L. Stabler Foundation Endowed Scholarship

Daouda Bamba
Marlee Blose
Brandon Casiano
Evon Danh

Sheldon Deimler
Gianna Devine
Cara Dobbins
Richard Duncan
Dezmyn Edmond
Amber Ferree
Mariano Figueroa-Perez
Madison Foley
Angela Frawley
Jessica Grice
Jade Harper
Raymond Heaton
Chance Holmes
Christine Hoon
Isaiah Isley
Jibin John
Derrick Johnson
Zuhra Korkutovic
Alista Lebo
Janay Nelson
Rachel Newhook
Hannah Pursel
Matthew Rau
Bryan Schlager
Alicia Smith
Thomas Sullo
Alexis Sunday
Maria Tran
Giancarlo VanWright
Mercedes Vega
Mary Weingartner

Duane and Susan Greenly Endowed Scholarship

Lauren Atticks

Edwin and Carol Engerer Endowed Scholarship

Achsa Harris

George and Rita Patterson Endowed Scholarship

Brittany DeArment

Glenn and Marsha Zehner Endowed Scholarship

Jerrold Coates

Harold J. Stahle, Jr. '44 Endowed Scholarship

Alex Medina
Toshia Singleton
Gary Stitzel

Hersha H. and Hasu P. Shah Endowed Scholarship

Krista Leach

Holtzman Family Endowed Scholarship

Danica Hoppes
Jessica Nickol

J. Martin Engle '29 Endowed Scholarship

Steven Anderson
Heather Miller
Shamar Waters
Aaron Watson

Jack F. Keiser Endowed Scholarship

Steven Weikel

James and Tamara Hepfer Endowed Scholarship

Dominique Brown
Tracy Patton
Asia Sargent
Sara Young

Lawrence and Julia Hoverter Charitable Foundation Endowed Scholarship

Matthew Bothwell
Jordon McNaughton

Lee Cave Endowed Scholarship

Chase Allen

Linda '78 and Todd Milano "Keep Smiling" Legacy Endowed Scholarship

Laiken Binner
Derrick Johnson
Alyssa Machmer
Danasia Taylor

Manuel DelValle Endowed Scholarship

Dominique Twiggs

Marvin '76 and AnnaMae Fultz Endowed Scholarship

Barbara Cain

Park and Mary Barner Endowed Scholarship

Myeshia McGhee

Pennlantic Endowed Scholarship

Chasity Detwiler
Bachelle Upshur

Peter and Mary Phillips '77 Endowed Scholarship

Jeremy Baez-Reyes
Michelle Harrington

Rhea Reese-Madden '40 Endowed Scholarship

Alexis Ensley-Gregg
James Whitall

Russell and Stella Kulp Endowed Scholarship

Marin Awoshie

Ruth Evinger '40 Endowed Scholarship

Cara Dobbins
Angela Frawley
Janay Nelson

Thomas and Theresa Fraticelli Endowed Scholarship

Shawnee Perchinski

Tremendous Living Foundation Endowed Scholarship

Michelle Feaster
Robert Kivlan
Krista Raymond

Wingert Family Endowed Scholarship

Daisy Olan-Cuevas
Abigail Pontz

Named Scholarships

Central Pennsylvania Association for Female Executives Scholarship

Caroline Weir

Central Pennsylvania Chapter of Certified Fraud Examiners Scholarship

Cara Dobbins

Dermody Properties Scholarship

Benjamin Doan
Cory Ginger
Jessica Green

HACC Graduate Fund Scholarship

Isaac Huggins

Hall Foundation Scholarship

Rebecca Hershey
Morgan Kerstetter
Jordon McNaughton
Kahmal Moore
Tequila Robinson
Tynesha Robinson
Jennifer Rush
Aaron Watson
Caroline Weir
Valerie Wolfe

John Crain Kunkel Foundation Scholarship

Gretchen Alleman
Tiffany Baker
Michael Demcio
Nicole Hollinger
Robert Kivlan
Megan Laughman
Alex Medina
Salli Miller
Erin Potts
Lesya Rohler

Joseph Schneitman '38 Scholarship

Dominic De Angelis
Dominique Frazer
Troy Hudson
Nicole McMillen
Bradley Monninger
Bonnie Motley

Marisol Santos
Stacey Stewart
Mercedes Vega
Teara Wells

Karen (Etzweiler) Hepler '73 Scholarship

Christina Zeiders

Part-time Faculty Scholarship

Stephen Suchanick

Shaashawn Dial-Snowden Award

Dominique Twiggs

William and Karen Gladstone Scholarship

Amanda Rodriguez
Valerie Wolfe

Annual Fund Scholarships

Bevan Allen
Carman Andrews
Kellie Aponte
Edwin Arroyo
Brenda Bacon
Siani Barbour
Jayme Baronski
Andre Blackshear
Nikeira Bland
Bria Blango
Robert Boca
Megan Bowers
Kimyetta Brown
Linda Brown
Ikea Bryant
Yarisaliz Cales
Christopher Collins
Grace Costella
Kenyotta Dash
Beverly Davy
Devon Dorsey
Sharon Ellmer-Reese
William Every
Decena Feliz
Mieshia Fraser
Eric Fry
Leonard Garfield
Teta Gaye

Thomas Glover
Jahquill Harmon
Jade Harper
Neomy Helena
Crystal Hill
Tania Hockenberry
Cory Hoover
Glenda Hoppie
Jacques Jean
Daveeda Jones
TaWanda Jones
Alicia Keefauver
Alista Lebo
Michael Lockett
Tyler Loper
Knowledge Mancotywa
Brittany Manning
Jaida May-Woodfolk
Adam Medina
Glenroy Mickens
Salli Miller
Maman-Lawan Moutari-Moussa
Yonnashae Newsome
Jessica Nickol
Ivettelis Nieves
Keith Nixon
Troy Panchana
Emelia Quaison
Heidi Rapp
Nathan Reichart
Stephon Roberts
Jasmine Robinson
Tynesha Robinson
Sandra Rodriguez
Unique Rodriguez
Marisol Santos
Asia Sargent
Wendy Shaffer
Awa Stateson
Katie Stevenson
Jerdene Swavely
Jason Thomas
Jonnesha Thompson
Tyree Tucker
Dominique Twiggs
Bachelle Upshur
Christina Vassor
Tirsa Vernarec
Aaron Watson
Caroline Weir
Brandy Yagalla
Kelly Young

SIX DEGREES OF CENTRAL PENN

BY SARAH BLUMENSCHEN

Ever played the game “Six Degrees of Kevin Bacon?” Yes, that Kevin Bacon of Footloose fame. The game, based on the idea of six degrees of separation, is that every celebrity is linked to Bacon through six personal connections or less.

If a group of friends in Pennsylvania were to play a game with a similar concept called “Six Degrees of Central Penn,” they would undoubtedly play for hours on end. The number of people who have graduated from, or who have been touched by the college, is considerable. Personally, I already had connections to Central Penn before coming to work in Summerdale through more than six graduates—my sister, my sister-in-law, a member of my church, and many close friends and classmates from high school.

If the number of Central Penn alumni connections is substantial, the number of community members impacted by and linked to the college is colossal. As the college continues to expand partnerships with area businesses, organizations and residents at the rate it is, there will be people with the ability to play “Six Degrees of Central Penn” not just in the keystone state, but across the globe.

Here are six recent ways Central Penn continues to make community connections:

1. LASTING FINGERPRINTS

The second annual Discover Forensics two-day camp, held July 30-31, introduced high school students to real-world crime scene investigations, facilitated by actual crime scene technicians. The fun, interactive activities—including

footwear impressions, blood stain pattern analysis and latent fingerprinting—aim to inspire students to take a closer look at the field of forensic science as it applies to criminal investigations.



“Discover Forensics camp is always very rewarding for me and the entire college community,” says Professor of Criminal Justice and Homeland Security Program Chair Sam Morgan. “A big shout-out to the criminal investigation division of the Cumberland County district attorney’s office for their continued support. Their partnership makes this camp possible.”

2. TAKE A BOW

Fifteen brave, creative and passionate students performed Central Penn’s first full-length student production in the Capital BlueCross Theatre this spring. Open to alumni and the community, the play titled “Survivors Among Us” told stories of how each student survived a time of personal struggle. It was a packed house. “The audience was impressed with the students’ high-quality performance, many commenting how wonderful it was to see non-theatre majors embracing the commitment needed to create powerful live theatre,” says Theatre Director Janet Bixler. “The community appreciated learning about the students’ lives and talents through the lens of theatre.” Not only can interested community members provide input on the program by serving on the theatre’s advisory council, they can also audition for parts! Visit centralpenn.edu/theatre for the full schedule.



Students Mbuyi (Steve-O) Osango and Jaida May-Woodfolk perform a personal survival story

3. EARLY EXPOSURE PROGRAMS

Across America, urban public schools continue to function with limited resources while responding to a growing population of students. Many of these students will not be adequately positioned to continue their education beyond high school, which is why early exposure programs have been implemented between colleges and universities and middle schools across the country. Here in the midstate, Central Penn's partnership with Harrisburg School District middle schools is a powerful one, existing to help students and parents to better understand the college resources available to them. Over the summer, the Epsilon Tau Chi club hosted a large group of middle school students on campus to experience a day in the life of a college student. "Being on a college campus, walking between the buildings, seeing the classrooms, and experiencing the culture creates a desire in young people, making college a real possibility for them ... and then the visioning and planning begins," says Professor of Business Administration Micaiah Smith-Morris.

4. FIXTURE IN THE COMMUNITY

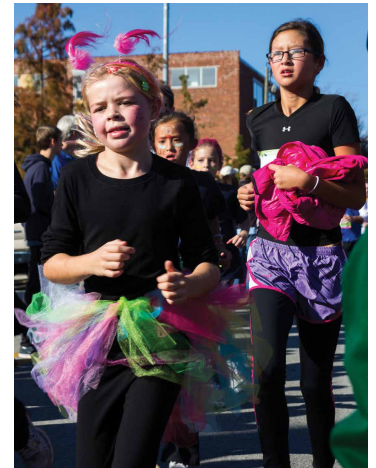
Central Penn President Dr. Karen M. Scolforo has been making waves in the community through board involvement, speaking engagements and outreach. In addition to serving on Harrisburg Mayor Eric Papenfuse's education committee, Scolforo serves on a high-powered committee to bring attention to Harrisburg's improvement initiatives. The below graphic just scratches the surface of the organizations she, and other faculty and staff, are contributing to. "A commitment to service and the incredible organizations that are driving this region is not just a pastime, it is a way of life," says Scolforo. This philosophy also leads students as they fulfill their mandatory community service requirements for graduation.



Admissions counselor Curtis Voelker '12 welcomes a group of high school students at Basecamp Summit

5. BASECAMP SUMMIT

What happens after high school graduation? This looming question is at the forefront of seniors' minds as they imagine the different possibilities and uncharted territory of the "real world." This November, Central Penn will be doing high school classroom presentations to help students get comfortable with the idea of budgeting, professionalism, effective study habits and navigating the transition to college. "These in-class presentations are based off our successful Basecamp Summit program, where local seniors learned about topics that helped guide their life choices after high school, whether they planned to join the military, go to college or join the work force," says Senior Director of Admissions Rebecca Bowman.



6. GIRLS ON THE RUN

"I learned I am the boss of my own brain," said one girl who participated in the Girls on the Run (GOTR) program, a nonprofit organization dedicated to creating a world where every girl knows and activates her limitless potential. Central Penn jumped at the chance to help girls embrace this "no-limits" mentality, and will host a fundraising 5k for the program at Adams Ricci Park on October 24 during the college's inaugural Homecoming Weekend. "GOTR is a national program that not only trains girls in third through eighth grades to run a 5k, but also teaches them how much they are worth in the process," says Noble Knights 5k Race Director Lezli Austen. "Raising funds and awareness for this program is an absolute win-win."

Vibrant Campus Eatery

A new agreement between Central Penn College and Greenwood Hospitality this year will renovate Scoozi's Café to create cafeteria-style food service, speeding service and enhancing the overall dining experience.

"On behalf of Greenwood Hospitality and our team of food service ambassadors, we are excited to continue serving the campus community," says Kevin Karczewski, general manager of the Harrisburg Hotel Corporation. "The student café hours of operation have been expanded, allowing our guests greater flexibility in choosing when to dine.

"We're in the process of working with designers, contractors and our corporate team to remodel and re-concept the student café into a vibrant campus eatery with a goal of opening fall 2015."

Upon completion, the cafeteria-style menu will include, "a line of grab-n-go selections to include salads, sandwiches, pre-packaged snacks, low-carb and freshly prepared snacks, and much more!" adds Karczewski.

Developing Future Leaders

On April 14 and 15, President Karen M. Scolforo and President Emeritus Todd A. Milano had the pleasure of serving as judges for the Future Business Leaders of America (FBLA) competition in Hershey, Pa. High school students from across the state competed in events to test their business knowledge and skills, and top state winners were eligible to compete for honors at the national leadership conference. Scolforo was "blown away" by the talent of the upcoming career professionals.



Dr. Karen M. Scolforo, president, judging at FBLA with Jacey Ross from The Art Institutes and Elizabeth Schneider from Keystone College.



President Emeritus Todd A. Milano waiting for his round to start at the FBLA state competition in Hershey, Pa.



EXAMINING SERVANT LEADERSHIP

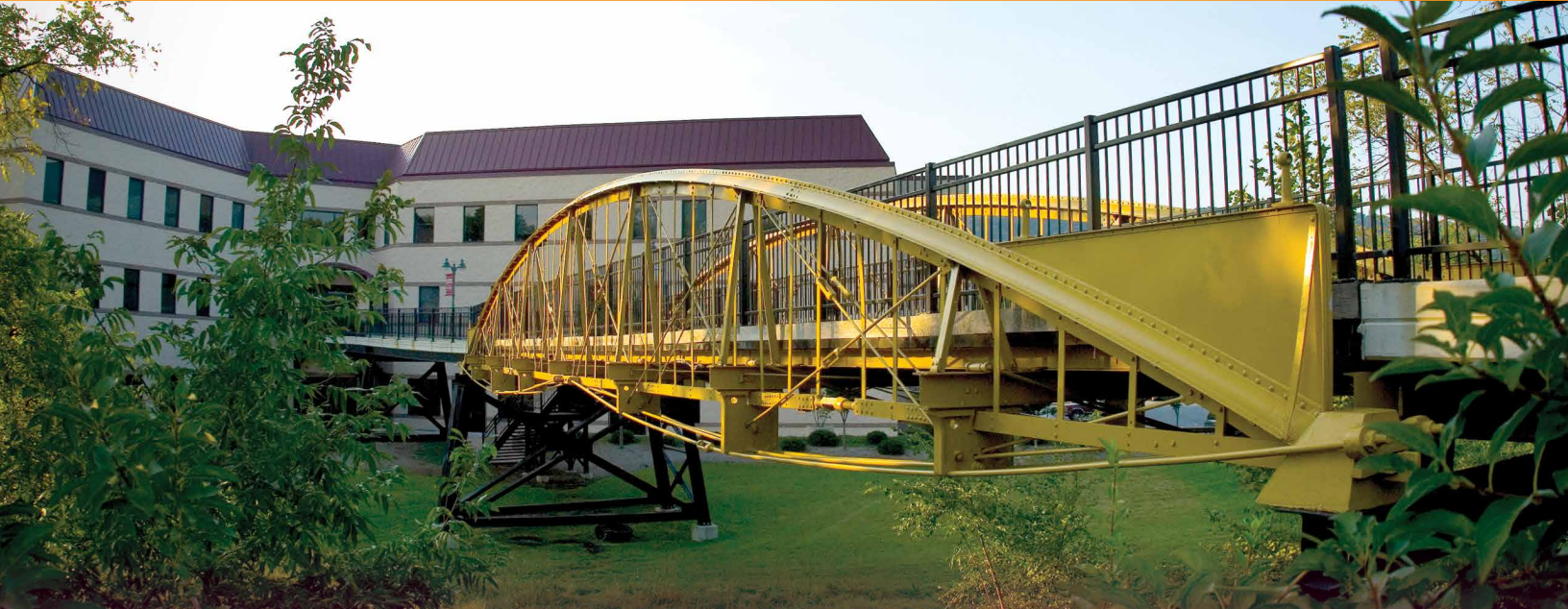
Part-time faculty member Dr. Brandon Foor's new book on servant leadership uses a doctoral, academic-based, research study to examine the relationship of compassion and servant leadership to 21st century management styles. Foor analyzes interview responses from 12 industry leaders on the concept of compassion and its role in servant leadership.

According to Foor, "Servant leadership impacts us all and compassion is vital in our modern lives. The research conducted ... shows compassion indeed plays a role in servant leadership through teaching by example, improving the well-being of others and building positive relationships between companies and employees."

"Servant leadership impacts us all and compassion is vital in our modern lives."

ELIMINATE BOUNDARIES

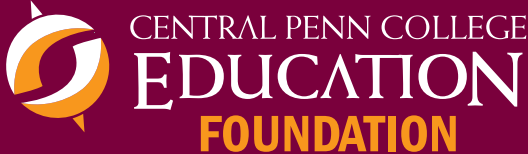
FOR TODAY'S STUDENTS



CREATE OPPORTUNITIES
FOR TOMORROW'S STUDENTS

Support the Central Penn College Education Foundation today!

By making a scholarship gift to the Central Penn College Education Foundation, you are making a significant impact on Central Penn College and its students. There are a variety of scholarship funds to choose from and you can designate your scholarship to be awarded in a way that is most meaningful to you. Contact us to learn more.



P.O. Box 309, 600 Valley Road
Summerdale, PA 17093-0309
1-800-759-2727 • 717-728-2263
centralpenn.edu/foundation
foundation@centralpenn.edu



On Feb. 11, Phillips Office Solutions presented the Central Penn College Education Foundation with a \$5,000 check to support student scholarships. As part of the generous gift, Phillips Office Solutions will be recognized in Central Penn's new health sciences building. Left to right: Matt Lane, executive director of the Central Penn College Education Foundation; Dr. Karen M. Scolforo, Central Penn College president; Michelle Wise, document management consultant of Phillips Office Solutions; and Peter H. Phillips, CEO of the Phillips Office Solutions.



Leanne Rutt (left), OTA program director, and Lisa Kennedy (right), financial planning coordinator, received the first faculty and staff member of the quarter awards. The new awards, initiated and organized by the human resources department, were given June 1. Their nominations included the following comments: "Leanne is amazing at supporting and encouraging her students, as well as teaching them everything they need to know about the OTA profession. You can tell she loves her job and is willing to help her students and other faculty as much as possible. She always has a smile on her face and is full of energy." "Lisa many times will postpone her lunch to meet with a student who is experiencing a crisis because she really cares and wants them to be taken care of. She is awesome!"



Activities Director Adrienne Thoman (third from the right) undertook a 10-week adventure in fundraising in her campaign to be the Leukemia & Lymphoma Society's 2015 Woman of the Year. Although she didn't earn the title of "Woman of the Year," she felt incredibly blessed to have the support of her family, friends and Central Penn College. She raised \$21,810, and the candidates combined raised more than \$270,000 for the Leukemia and Lymphoma Society and the hope to be able to live in a cancer-free world.



Engle Society

On May 28, the Central Penn College Education Foundation held its annual Engle Society gathering for faculty and staff. At the event, the college's marketing & communications department was recognized with the annual Engle Society award for its many years of support and involvement in education foundation related initiatives. The Engle Society, recognizing leadership level scholarship contributions among faculty and staff, is named in memory of J. Martin Engle '29, founding trustee of the education foundation, and his wife Ethel.



On April 21, representatives of the Hall Foundation visited campus to meet recent Central Penn College student recipients of the Hall Foundation scholarship. Since 2006, The Hall Foundation has contributed more than \$100,000 in student scholarships through the Central Penn College Education Foundation. Left to right: (back row) Hall Foundation representatives Gerald N. Hall Jr., Darren P. Hall and Robert E. Hall, and student recipients Tynesha Robinson and Jordon McNaughton; (front row) Student recipients Caroline Weir, Aaron Watson and Kahmal Moore.

HOMECOMING WEEKEND

Friday, Oct. 23

Golden Graduate Reunion

2-5 p.m. – The Conference Center at Central Penn College
Open to all 1960s and prior graduates, with special recognition for the graduates of 1965 and prior as they are inducted into the Golden Knights Society, a society for graduates who have celebrated their 50th anniversary.

Dinner: \$10 each for graduates and a guest
\$15 additional family and friends

Dinner is complimentary for graduates of 1965. Tickets are \$10 for all family and friends

RSVP by Oct. 16: centralpenn.edu/Golden or 717-728-2295

Saturday, Oct. 24

Noble Knights 5K – New for 2015!

8-10 a.m. – Adams Ricco Park, Enola, Pa.
Get you and your family's hearts pumping and feet moving before Fall Harvest with a fun 5K that benefits the Girls on the Run program.

Admission: \$25 general public; \$15 Central Penn alumni, students, faculty and staff; \$5 Girls on the Run alumni

Register at centralpenn.edu/Noble

Fall Harvest Festival

10 a.m.-2:30 p.m. – Central Penn College
Free community festival

- Live music
 - Shrimpboat:** National folk/funk/R&B band
 - Salt and Light:** Rock, Country and Soul Fusion
- Pumpkin carving
- Mechanical bull
- Kiddie Corner
- Face painting
- Themed basket raffle
- Haunted Library
- Caramel apples and popcorn
- DJ's Smoke Shack – BBQ and sides for sale
- Various vendors and crafts with items for sale
- Tarot card readings
- Homecoming King and Queen
- Dance team performance



THEATRE PERFORMANCES

Noon – Pennsylvania Regional Ballet
12:45 p.m. – Children's Play
1:15 p.m. – Comedian Earl David Reed

Event is rain or shine!

Soccer Games

3 p.m. – East Pennsboro High School
Watch the Central Penn Knights as they compete in a USCAA Division II game.



**NEW
FOR 2015!**

Alumni Feast 'n' Brews

Saturday, October 24th

11:30 a.m. – 2:30 p.m. • Scoozi's Lounge & Patio

Bring your appetite for the inaugural Alumni Feast & Brews Reunion Tent! In addition to broad decade reunions for all graduates, we will celebrate graduation anniversary reunions for the classes ending in 0 and 5.

Enjoy all-you-can-eat Oktoberfest fare, including: beef hot dogs, sauerkraut, sirloin angus burgers, BBQ chicken quarters, German potato salad, smoked gouda and penne pasta salad, soft pretzels and dipping sauces, and assorted desserts. Also on hand will be premium craft beer and quality wine provided by alumni-owned or operated breweries and vineyards:



Harrisburg street band No Last Call will open the reunion tent, playing funky tunes to get people smiling and clapping, followed by cover song trio The Tinsel Wigs and an acoustic set from singer/songwriter Jason Barshinger '03. Caricature artists and photo areas will provide you with perfect souvenirs to remember the day of nostalgia, friends and family.

Student-led tours will show you Summerdale campus updates—great for fully-online or Lancaster Center graduates who may have never been to main campus.

Admission: \$15 lunch ticket
\$20 lunch/wine/beer ticket (cup included)
\$7 children (ages 3-10)

Event is not open to current Central Penn College students.

ENJOY EXPRESS CHECK-IN BY PRE-REGISTERING AT
centralpenn.edu/AlumniFeast

OCTOBER 23 & 24, 2015

Alumni e-news

Central Penn College's Office of Alumni Engagement was created this year to provide career support, social events and benefits to our more than 11,000 graduates. The alumni office sends monthly e-news editions on career and mentor opportunities, alumni events and recognition, reunions, Homecoming Weekend, College news, etc. If you would like to begin receiving alumni e-news to learn about exclusive alumni news and events, please subscribe at centralpenn.edu/alumni or through our QR code.



Quickly and easily sign up with your smart phone!

CPC OFFICE OF ALUMNI ENGAGEMENT - JUNE 2015 EDITION [View this email in your browser](#)



[Facebook](#) [Twitter](#) [Website](#) [LinkedIn](#)

MESSAGE FROM THE PRESIDENT - Welcome Alumni!



Whether it has been five or 50 years, we look forward to keeping you connected and involved with your alma mater through this e-newsletter. I hope you take advantage of all the opportunities, resources, services and benefits offered to you through the new Office of Alumni Engagement and the Central Penn Alumni Association!

Our alumni are some of the most amazing people I have had the good fortune to meet –trailblazers, educators, professionals and deeply focused individuals. Central Penn students can look no further than the tremendous graduates who have come before them for inspiration as they earn their CPC associate, bachelor's and master's degrees.

Respectfully,
Dr. Karen M. Swaffern
President



Central Penn College's Office of Alumni Engagement was created this year to provide career support, social events and benefits to our more than 11,000 graduates. The alumni office sends monthly e-news editions on career and mentor opportunities, alumni events and recognition, reunions, Homecoming Weekend, College news, etc. If you would like to begin receiving alumni e-news to learn about exclusive alumni news and events, please subscribe at centralpenn.edu/alumni or through our QR code.

Alumni Council – **New Governing Body for 2016!**

Serve as ambassadors of the college in building programs that support lifelong connections to Central Penn College alumni.



Nominate yourself or another graduate!
Nomination deadline: October 1, 2015
centralpenn.edu/alumniCouncil



[Facebook.com/CentralPennAlumni](https://www.facebook.com/CentralPennAlumni)



[Twitter.com/cpcalumni](https://twitter.com/cpcalumni)



[Central Penn College Alumni](https://www.linkedin.com/company/Central-Penn-College-Alumni)

Alumni, please keep us informed

We don't want you to miss a single issue of your alumni publication, so be sure to let us know if you marry, move or change jobs. Your success is important to us so keep us informed of career changes and promotions by visiting centralpenn.edu/letusknow. And if you know someone who attended Central Penn, but is not receiving *PennDulum*, encourage them to contact us or stop by and visit. Alumni are always welcome!

1960s

Richard A. Krohn '61, accounting, made the fall 2015 Democratic ballot for Middlecreek Township supervisor. Retired from Mid Atlantic Coca Cola, Krohn has been a member of the township planning commission for more than 30 years and has chaired that commission for at least 25 years. "When I attended Central Penn in Harrisburg, there were five of us who had an apartment on Derry Street," Krohn recalls fondly. He resides in Middleburg, Pa.

1970s

Rev. George Minick '73, management, is pastor at St. Paul Evangelical Lutheran Church. "My two years at Central Penn were some of the best of my life," says Minick. "I made a lot of great friends, and received a great education that has given me confidence as I have gone through life." He resides in Hummelstown, Pa. mhc80@verizon.net

Donna (Reynolds) Sciortino '74, executive secretarial, is manager of investments at the PA Housing Finance Agency. She resides in Harrisburg, Pa. dee1sciortino@gmail.com

Sheila (Wilston) Eckman '77, retail merchandising, and '14, B.S. in business administration, is an executive assistant at Willow Valley Associates. "I chose to do most of my classes online and I found that a very good way to complete my education since I am also working full time," says Eckman. "My professors were great and the administration was very helpful in guiding me through the education process." She resides in Lancaster, Pa. sheila.eckman@mymail.centralpenn.edu



Sheila Eckman '77, '14

Catherine (Young) Junior '77, business, is in executive administrative – constituent services with the Tarrant County Government. She resides in Crowley, Tex.

Susan (Nauss) Exon '78, legal assistant, is an associate dean for faculty development and professor of law at University of La Verne College of Law. "I was promoted to my current position in July 2013, and I published my first law school textbook, *Advanced Guide for Mediators* (2014 LexisNexis) in May 2014. Exon resides in Riverside, Cal.

Kathleen (Gallagher) Barton '79, travel and tourism operations, is director of annual giving at Mount Saint Mary College. She resides in Wallkill, N.Y.



Elaine Cave '79 and Joann Sweeney '79

Elaine (Morgan) Cave '79, medical assisting, and **Joann (Shuey) Sweeney '79**, medical assisting, reconnected with **Linda A. (Meiller) Milano '78**, legal secretarial, during a mini reunion in January. The roommates shared an apartment "on the hill."

1980s

Rebecca (Shank) Wilcox '80, executive secretarial, is a project administrator at General Dynamics. She resides in York, Pa.

Carol Wengert '81, management, is self-employed and a mother. She resides in Gurnee, Ill. kcbaw2@gmail.com

Teresa (Shrader) Helwig '82, travel and tourism operations, is a BSN/RN at Wellspan Health/York Hospital. "I still love to get together with my roommates from Kathi 3 and Crockett 210!" shares Helwig. "Memories and friends were made for life! My educational endeavor at Central Penn Business School gave me an excellent foundation for my future educational endeavors, as well as the emphasis on professionalism. She resides in New Oxford, Pa. teresancorinne@embarqmail.com

Matt Levandowski '82, travel and tourism operations, was promoted to president/CEO of Heritage Family Credit Union. He resides in Pittsford, Vt. Heritage Family Credit Union is a \$385 million dollar credit union with 40,000 members serving Southern Vermont and parts of New Hampshire.



Matt Levandowski '82

Pam Hodges '83, accounting, is in accounts receivable at 21st Century Cyber Charter School. She resides in Phoenixville, Pa.

Ed Wetmore '84, computer information systems and '10, B.S. in

business administration, is a program manager with the Commonwealth of Pennsylvania Governor's Office of Administration. "The education was an excellent investment," says Wetmore. "I also met my wife at Central Penn in 1982." He resides in Mechanicsburg, Pa.

Wanda (Curfman) Barnett '85, medical assisting, and '09, B.S. in business administration, is senior executive assistant to the president/CEO, CFO and COO at J.C. Blair Health System, Inc. Barnett was married Jan. 24 and resides in Hesston, Pa. curfbuddy65@gmail.com

Lori Diehl '86, office communications, is enrollment coordinator at HTH Worldwide Insurance Services. She resides in East Norriton, Pa. lori.munchkin@gmail.com

Kim (Rodeffer) Hollinger '86, court reporting, has been an official court reporter with the County of Berks for 29 years. "My husband, Michael, and I have a daughter, Ryland, who is 7 years old," says Hollinger. "I have great memories from my time at Central Penn. I met some wonderful friends there!" She resides in Reading, Pa. tarheel121666@aol.com

Susan (Noel) Ryder '87, medical assisting, is a freelance writer and communication professional. She resides in New Cumberland, Pa.



Susan Ryder '87 bumps into Todd A. Milano in Lemoyne, Pa.

Scott Holub '88, computer information systems, is customer engineer II at NCR. He resides in Sunbury, Pa. scott615@ptd.net

Jennifer (Haag) Kershner '88, travel and tourism operations, works in claims at Sam's Club. She resides in Blandon, Pa.

Lisa Thomas '88, administrative, is a clerk typist 3 with the Pennsylvania Department of Labor & Industry's Worker's Insurance Fund. She resides in Sunbury, Pa. queenbee0268@yahoo.com

Susan (Dietrich) Whipp '88, legal assistant, is secretary to a Supreme Court Judge in the state of New York. She resides in Apalachin, N.Y.

Michael A. Kruleski '89, mass media, is a communications specialist with the Pennsylvania House Republicans. After more than 25 years as a WHTM-TV ABC27 photojournalist, Kruleski looks forward to applying his expertise as a House video staff member. He resides in New Cumberland, Pa., with his wife and two sons. Mkruleski@pahousegop.com

Lillie Ann Noël '89, legal assistant, is a senior paralegal specialist at the U.S. Department of Justice. She also works as a senior litigation paralegal in the antitrust division. Noël resides in Atlanta, Ga.



Lillie Ann Noël '89

1990s

Kerri (Gerst) Eyer '92, travel and tourism operations, is administrative assistant, faculty services, at Hood College. She resides in Woodsboro, Md. annasmom28@yahoo.com

Allison (Porter) Mengel '92, travel and tourism operations, is a travel coordinator at Sterling Global Operations. She resides in Knoxville, Tenn.

JENISE L. HARRIS '11

Excitement abounds with a major fundraising effort underway to raise \$48.5 million for the 2016 Republican National Convention, and alumna Jenise L. Harris is leading the charge with the Cleveland Host Committee. As senior associate at Maverick Finance in Harrisburg, she advises and manages political committees and nonprofit clients, helping them to meet their financial goals. Harris also develops and executes client financial budgets, and is involved in donor prospecting, major donor relations and event planning. Incredibly, she also finds time to manage social media campaigns and handle routine office operations. When it comes to event planning, her tasks vary from small events like donor receptions all the way up to large-scale inaugural ceremonies.

Prior to joining The Mavericks in 2012, Harris was a legislative assistant for the Pennsylvania House of Representatives and a reporter/intern for The Perry County Times. Her email is jeniselharris@gmail.com.



Jenise '11, with daughter Adelyn and husband Adam Harris.

Married to C. Adam Harris, daughter Adelyn Grace is six years old ("Going on 16!" Harris added). The family resides in Mifflin, Pa.

Why Central Penn?

"I chose Central Penn because of the fully-online program which allowed me to work full time, get an education and still devote quality time to my daughter. Central Penn helped me develop the intellectual aptitude necessary for my current position. Finishing a degree online requires organization, self-accountability and the ability to work independently, which has definitely contributed to my professional success.

"My mom always told me, 'A degree will open doors, but it's your personality and skill set that will help you succeed,' and I also attribute my success to the optimism, work ethic and loyalty that my mom instilled in me."

Stephanie (Wealand) O'Hara '92, business administration – marketing, is director of sales & marketing at Landmark Homes. She resides in Narvon, Pa. StephanieO@ownalandmark.com

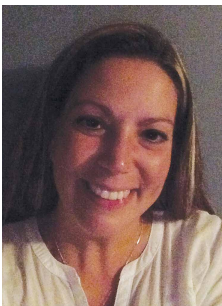
Chris (Derr) O'Malley '92, business administration – retail management, is a contact center supervisor at State National Companies. She resides in Watauga, Tex.

Matthew Spangler '93, computer information systems, works at RH Crawford, Inc. He has been married 22 years, and has two sons – an 18-year-old freshman in college at Shippensburg with a baseball scholarship, and a 13-year-old going into eighth grade who is a baseball player and honor roll student. Spangler resides in Spring Grove, Pa. mspangler@goldgloveacademy.net

Shannon Miller '94, office administration, is an income maintenance caseworker with the Commonwealth of Pennsylvania, working there for 16 years. “I am the proud mom of three great kids, ages 18, 11 and eight,” says Miller. She resides in Watsontown, Pa. shannonsue1973@yahoo.com

Michelle (Turck) Orr '94, office administration, is the vice president of operations at Truth for Women. “My husband Matt and I celebrated our 20-year wedding anniversary in May,” shares Orr. “I still keep in touch with most of my Central Penn roommates. Their friendships have a special place in my heart.” She resides in Easton, Pa. michelleturckorr@gmail.com

Gloria (Snyder) Seroskie '95, physical therapist assistant, is a physical therapist assistant at Evangelical Community



Gloria Seroskie '95

Hospital. She resides in Elysburg, Pa. ptassist@yahoo.com

Lori (Hinkle) Bush '96, hotel/motel management and '03, B.S. in business administration – marketing, is a student payroll coordinator at Franklin & Marshall College. She resides in Mountville, Pa.

Dawn Edris '96, travel and tourism operations, is 1st deputy for the County of Lebanon. She resides in Jonestown, Pa. dawn.edris@yahoo.com

Cathy (Leppo) Sheesley '96, office administration, was married on September 20, 2014 to Benjamin Sheesley. They have five children, ranging from 19 to eight years of age. Sheesley resides in Carlisle, Pa.

Nickole Baker '98, legal secretarial, is a paralegal with the Commonwealth of Pennsylvania – DCED – Office of Chief Counsel. She resides in Carlisle, Pa. nickole_baker@yahoo.com

Christian LaRue Bednar '98, accounting, is a staff accountant at the Pennsylvania Bar Institute. “The best decision I ever made was choosing Central Penn!” says Bednar. She resides in Wellsville, Pa. Christian_larue2@hotmail.com

Lisa (Payne) Robbins '98, accounting, is office manager at Spectrum Electrical Services, Inc. She resides in Kingsley, Pa.

Michelle (Chilcote) Brown '99, captioning/court reporting, is an official court reporter with the County of Lebanon. She resides in Ephrata, Pa.

Amy (Musselwhite) Morrissey '99, A.A.S. in medical secretarial, is department secretary for the transplant services department at PinnacleHealth System, where she has worked for 15 years. Eleven years ago, she transitioned



Amy Morrissey '99 with her husband, Jim, and children, James and Olivia.

to a home office. “It has been a blessing to still be in the workforce, specifically in the field I was trained at Central Penn, and to be there for my kids while they grow up. I enjoy what I do and it is a very busy office, so I’m never bored! I currently live in Annville with my husband, Jim, and two children, James, 11, and Olivia, 8.”

2000s

Kristi (Defibaugh) Beltz '00, A.A.S. in physical therapist assistant, was named director of rehabilitation services and an employee of RehabCare, which manages the program. She resides in Douglassville, Pa.

Thomas Hassinger '00, A.S. in accounting, is a warehouse shipper at RML. He resides in Millersburg, Pa. hassingert1@hotmail.com

Jennifer (Raker) Miller '00, A.S. in communications, is a customer service representative at Capital BlueCross. She resides in Enola, Pa.

Robert Almy '01, A.S. in marketing, is northeast regional sales director at Wesnic, Inc. He resides in Lafayette Hill, Pa. hap@wesnic.com



Barry Baker '01

Barry Baker '01, A.A.S. in multimedia/internet production, is sales clerk and owner of Fairview Country Farm

& Bakers Online Sales. He resides in Milton, Pa.

Kim McCalips '01, A.S. in child care management, is a certified pharmacy technician at CVS/Pharmacy. She resides in Lewistown, Pa.

Blake Kenley '03, B.S. in business administration – marketing, is a marketing manager at D&H Distribution. He resides in Harrisburg, Pa. bkenley5@gmail.com

Amber (Leonard) Musselman '03, A.A.S. in hotel/restaurant management, has been employed at Pizza Hut for 10 years and was married in October 2014. “I started as a shift manager and within two years was promoted to assistant manager,” says Musselman. “I’ve been general manager of the Breezewood, Pa., location for almost three years.” She resides in Saxton, Pa. amberdawn1221@yahoo.com

Scott Packard '03, A.S. in marketing, is a transition specialist at Sapphire Health eMAR. He resides in Altoona, Pa. scottapackard@gmail.com



Scott Packard '03 with his wife, Alison, and sons Brycen and Langdon

Jessica (Tunnicliff) Sandstrom '03, A.S. in accounting, is general manager at Mid Atlantic Broadcasting. “My time at Central Penn was incredible ... attending a school where the professors care about their students made a huge difference in my



McCalips '01 with her nephew, Deacon

college experience, and now 12 years later, I know I can still call them for advice,” says Sandstrom. She resides in Blossburg, Pa. jessilynn7@gmail.com

Laurel Shearer '03, B.S. in business administration – management, is an accounting clerk at SEI Transportation. She resides in Duncannon, Pa.

Brandalyn (Brindle) Thorpe '03, B.S. in business administration – management, is a department manager at Walmart. She resides in Chambersburg, Pa.

Sarah (Simonton) McKee, '04, A.A.S. in office administration, is clerk typist 2 at the Commonwealth of Pennsylvania’s Department of Human Services – LYDC. She resides in New Bloomfield, Pa.

Stacey (Pierce) Scott '04, B.S. in business administration – management, is a nurses assistant at Dedicated Nursing Associates. She resides in Red Lion, Pa.

Christie (Hopkins) Weismantel '04, A.S. in accounting, is a financial analyst at TE Connectivity. She resides in Mount Joy, Pa.

Lynette (Turner) Krebs Edwards, '05, B.S. in business administration – management, is a faculty member at Harrisburg Area Community College.

PATRICIA (NESTMAN) CATLIN '99, '08

“I finally landed that dream job in 2012!” exclaims Patricia (Nestman) Catlin, adding, “And I’m so happy that I ignored those high school counselors who said I wasn’t college material. Central Penn was an awesome experience. The professors were great; the classes were focused with real-world examples and hands-on experience ... truly priceless! My education opened doors I never imagined, and thanks to the support of family, classmates and Central Penn’s dedicated and caring staff, I arrived well-prepared!”

Graduating with honors in 1999 from the medical assisting program, Catlin spoke at the pinning ceremony, went on to nursing school, then enrolled in Central Penn’s Bachelor of Science in Business Administration, healthcare administration program. Each new venture – admissions coordinator,



director of admissions, practice manager and electronic medical records implementation specialist, and then consultant for electronic medical records—led her closer to that dream job with Tenet Healthcare Corporation in Dallas, Tex. Hired as clinical

implementation specialist and promoted just one year later to clinical services team leader, Catlin now serves as Tenet’s national manager of clinical systems support, leading a team of 30 people across six states. Working together, her team successfully implements electronic medical records for Tenet’s multi-specialty physician practices which span 14 states.

Her community service includes Alzheimer Association and Carolina Canines (service and therapy dogs for veterans). Classmates can be in touch at phcatlin@gmail.com. She resides in Frisco, Tex.

Special Central Penn Memories:

“Dr. Beyer’s coding class and Mrs. Miller’s A & P classes,” recalls Catlin, “and finding my little pocket notebook that we were required to create as a reference for internship brought back a flood of other memories.”

She resides in Lebanon, Pa. lynkrebs7@aol.com

Melissa (Moyer) Meyers '05, B.S. in business administration – management, is a buyer at American Crane & Equipment. She resides in Boyertown, Pa.

Evelyn Rivera-Wilson '05, B.S. in business administration – healthcare administration, is a collector level 11 at CNH Capital.

“Shortly after graduation, I started with CNH, where my income went from 26K to 41.3K. It was truly worth all the hard work. At Central Penn I made new friends, many of which I am still in contact with today. Graduating from college was the absolute best thing I have ever done. Thank you, Central Penn.” Rivera-Wilson resides in Lancaster, Pa.



Evelyn Rivera-Wilson '05

Britta Aller '06, B.S. in business administration – management, is a warehouse worker at Valley Foods, Inc. “I’m also a nine-year Avon independent sales representative,” says Aller. “I’ve been able to increase my sales from last year; I made Honor Society for the first time last year.” She resides in Jonestown, Pa. brittaaller_avonrep@yahoo.com

Stefanie Christy '06, B.S. in business administration – marketing, is a fiscal assistant, AP, at 21st Century Cyber Charter School. “After almost eight years at my former job, I left for a better opportunity!” says Christy. “It was scary, but well worth the change.” She resides in Downingtown, Pa. stefchristy@yahoo.com

Justine (Cook) Riley '06, A.A.S. in medical assisting, is a medical assistant at Wellspan Health, where she has worked for 6 and a half years. She is happily

married with one daughter and two sons, and resides in Bendersville, Pa.

William Grace '07, B.S. in criminal justice administration – law enforcement, is chief enforcement officer with the County of Cumberland. He resides in Carlisle, Pa.

Allison (Vogelsong) Kennedy '07, A.A.S. in physical therapist assistant, is a physical therapist assistant at Genesis Rehab Services. “I loved my experience at Central Penn – the ability to complete an internship that later led to my career!” says Kennedy. “I have been very happy in a field that allows me to help others. Since graduating I have gotten married, I have a daughter and completed my education for my Doctorate in Physical Therapy.” She resides in Mechanicsburg, Pa. arkennedy5@gmail.com

Lee Plank '07, B.S. in information technology – cyber security, is an IT specialist with the Defense Information Systems Agency. Married on July 11, 2011, Plank’s daughters were born April 7, 2012 and September 13, 2013. Plank was promoted to GS12 and accepted a position under the mainframe hardware maintenance/performance team. Plank resides in New Cumberland, Pa.

Jessica Scheeler '07, B.S. in information technology – multimedia/internet production, is senior associate / senior front end technologist at PricewaterhouseCoopers. “In 2013, I began working for a digital agency, BGT, one month before they were acquired by PricewaterhouseCoopers, yes the same people who are responsible for securing the Oscar results,” explains Scheeler. “As part of PwC Advisory practice, I work with the team in Hallandale Beach, Fla., to deliver end to end digital solutions for clients across all sectors, including retail, insurance, and government. While in Miami, Fla., I was fortunate enough to meet my partner, Deb, purchase my



Jessica Scheeler '07, with her rescue puppy, Phoenix

first home and rescue a beautiful puppy, Phoenix.” jessica@jscheeler.com

Steven Stegmeier '07, B.S. in business administration, is in administrative support – facilities at TE Connectivity. He resides in Harrisburg, Pa. steven.stegmeier@gmail.com

Emma (Yingling) Goodyear '08, B.S. in accounting, is assistant manager of accounting at NRA Group, LLC. She resides in New Cumberland, Pa. eggoodyear@gmail.com

Heather Govan '08, A.S. in child care management and '10, B.S. in business administration, is an NFC traffic support coordinator at Comcast Spotlight. She resides in Woodbury, N.J.



Heather Govan '08, '10

Jessica Hoffman '08, B.S. in criminal justice administration, is a county caseworker II with Cumberland County. She resides in Elliottsburg, Pa. jlhoffman2006@hotmail.com

Lauren (Golliday) Zaryk '08, A.A.S. in physical therapist assistant, is a physical

therapist at ATI Physical Therapy. She resides in Harbeson, Del. lzaryk@gmail.com

Philip Belic '09, B.S. in business administration – management, is an executive recruiter at Method3. He resides in Enola, Pa. filbelic@gmail.com

Jason Blymire '09, A.S. in paralegal and '10, B.S. in legal studies, is a billing account executive at Comcast. He has two daughters, ages three and six. He resides in Enola, Pa.

Megan (Bartley) Casner '09, B.S. in criminal justice administration, is an institutional parole assistant at the Pennsylvania Board of Probation and Parole. “I remember Central Penn for the small class sizes and every professor knew who their students were,” says Casner. “No matter what, they were eager to see their students succeed. Since graduating in 2009 I have: served in the U.S. Army; gotten married in 2011; and began graduate school and graduated May 1. She resides in Port Matilda, Pa. megara2688@yahoo.com

Jennifer (Peebles) Doub '09, A.A.S. in medical assisting, works at the front desk at Alpha Fitness and is studying for her personal training certification so she can teach exercise classes in the fall after her baby is due. Doub was married on May 7, 2011 and resides in Chambersburg, Pa. jennifer_doub@yahoo.com



Jennifer Doub '09

Bethany (Sudbury) Kappenstein '09, B.S. in business administration and '15, M.P.S. in organizational leadership, is human resource specialist at the VA Medical Center in Lebanon, Pa. She resides in Newmanstown, Pa.

2010s

Marci (Neidig) Bailey '10, B.S. in business administration – marketing, is sales and marketing assistant at CSB Technology Partners. “I got married May 10, 2014, and I have two beautiful children, Reed and Cassidy,” says Bailey. “I am recently certified in interior decorating and am taking classes to receive my realtor license and will then use both to stage and sell homes, while promoting my own business.” Bailey resides in Bainbridge, Pa. marcineidig@yahoo.com



Marci (Neidig) Bailey '10 with husband Brandon and children, Reed and Cassidy

Sara Brophy '10, B.S. in business administration – marketing and '14, B.S. in business administration – human resources management, is an inside sales specialist at New Penn Motor Express. She resides in Lebanon, Pa.

Daneen Collier '10, B.S. in business administration, is an accounting associate at Central Penn College. “I didn’t have a college degree before the age of 40,” shares Collier. “After my success at Central Penn, I also completed my master’s degree before I was 50.” She resides in York, Pa.

Tabitha Cordero '10, B.S. in business administration, is an HR business partner with LGH. She resides in Lancaster, Pa.

Shawn Flickinger '10, A.S. in criminal justice and '12, B.S. in criminal justice administration, is a security officer at Central Penn College. His fondest

JARET WILSON '09

This bright and savvy business administration graduate has put his marketing concentration to inspiring and imaginative use. As the creative director of The Wilson Concept—a creative agency that he founded in Philadelphia, Pa.—Wilson leads a team that develops branding, web and mobile app solutions for the agency’s clients.

Wilson also generously volunteers his time to Central Penn, most recently as a guest lecturer and to donate a poster design for the walls outside the new Office of Alumni Engagement. The testimonial posters showcase: Wilson; Kathryn Aumiller '76, retail merchandising, who is the executive director of the PA Regional Ballet; and Jenise Harris '11, B.S. in corporate communications, who is a senior associate at Maverick Finance.



Check out what Wilson had to say on his poster:

“I am thankful for all the dedication and real-world application Central Penn has given me, which guided my career path into next steps, rather than distant dreams. After graduation, I was offered an internship with BBDO, one of the largest advertising agencies in the world. I made connections with the International CEO of BBDO and since then have founded my own creative agency in Philadelphia that focuses on digital branding and interactive design. At The Wilson Concept, we believe in the people, the process and the passion to make magic. With Central Penn’s professional education, I was able to build my skills—my superpowers—and now I can inspire others to do the same!”

memory of Central Penn is the day he graduated. He resides in Harrisburg, Pa.

Megan (Neidig) Garber '10, B.S. in accounting, is a staff accountant at Select Medical Corporation. Her fondest memories of Central Penn include the women's basketball team, Fall Harvest, the financial aid and career services offices, and the "awesome accounting professors." She resides in Bainbridge, Pa.

Emily Gebbie '10, A.A.S. in medical assisting, is a patient care tech with Unity Health Systems in the emergency room, and is completing her nursing BSN part-time. She resides in Hilton, N.Y.

Marlina Ghattas '10, B.S. in accounting, is a financial analyst at Foot Locker, Inc. She resides in Harrisburg, Pa.

Brittney Joniec '10, B.S. in business administration – marketing, is a security officer at Hollywood Casino. She resides in Harrisburg, Pa. joniecb89@gmail.com

Nicole Lee '10, A.A.S. in physical therapist assistant, is a physical therapist assistant at Select Medical Corporation. She resides in Marysville, Pa. Nlee133@yahoo.com

Sarah Lupp '10, B.S. in business administration, is a review technical assistant at SRA International, Inc. She resides in Littlestown, Pa.

Abby Miller '10, A.A.S. in physical therapist assistant, is a PTA at Drayer. She resides in Mechanicsburg, Pa.

Ann Rissinger '10, B.S. in business administration, received a promotion in April 2013 to her current position as vendor analyst at the Pennsylvania Higher Education Assistance Agency. She resides in Camp Hill, Pa.

Erin Pentz '10, B.S. in business administration – finance, is an associate attorney at Mette, Evans and Woodside. Pentz resides in Harrisburg, Pa.

Erika Reisch '10, B.S. in business administration, is capital projects administration manager at Hersha Hospitality Management. "I loved my experience at Central Penn because my adjunct professors often worked full time in their field and they brought real-life experiences to the classroom," says Reisch. She resides in York, Pa.

Jeff Smith '10, B.S. in information technology, is an information systems security officer with the federal government. He resides in Lykens, Pa.

Alex Smyser '10, A.S. in computer information systems and '11, B.S. in information technology – cyber security and network management, is a technical security specialist II at the Cumberland County IMTO. He resides in Carlisle, Pa.

Jessica (Hopple) Watson '10, B.S. in business administration – management, is a payroll specialist at Paysmart Payroll Services. She resides in Mechanicsburg, Pa.

Brittany Williams '10, B.S. in business administration, is staff assistant at Johns Hopkins Hospital and is currently in graduate school for a master's in health care administration and an M.B.A. She resides in Baltimore, Md.

Cristy Brenneman '11, B.S. in legal studies, is a commercial litigation paralegal at Dykema Cox Smith. She resides in Garland, Tex.

Melanie Canfield '11, B.S. in accounting, is a compensation analyst at Fulton Financial Corporation. She resides in Millersville, Pa. mcanfield724@gmail.com

Keith Donaldson '11, B.S. in business administration, is a buyer at Geisinger. He resides in Lewistown, Pa.

Karen Koch '11, A.A.S. in travel and tourism operations, is a front desk representative at Hampton Inn. She

resides in Mechanicsburg, Pa. Karen.Koch@mymail.centralpenn.edu

Scott Mailen '11, B.S. in criminal justice administration, is an activities counselor at Philhaven. He resides in Annville, Pa.



Anh '11 and Tyler McClarren '12

Anh (Phan) McClarren '11, B.S. in business administration – healthcare administration, is a human resources manager at Salamander Resort & Spa. She married **Tyler McClarren '12**, B.S. in business administration, on July 12, 2014 at Cape Henlopen State Park Beach in Lewes, Del. He is currently a personal trainer at Gold's Gym. They reside in Ashburn, Va. anh.tyler2014@gmail.com

Samantha Meyers '11, B.S. in business administration, is a hand receipt manager at Bowhead. She resides in Chambersburg, Pa. sammeyers06@yahoo.com

Dustin Hughes '12, B.S. in information technology, is tech. leader at Leidos, Inc. "After graduating I obtained my CCNA and relocated from Savannah, Ga., to Bel Air, Md.," says Hughes. "I currently

work on Aberdeen Proving Ground, Md. dustin.hughes81@gmail.com

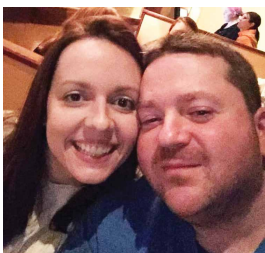
Crystal (Geiger) Crumlic '12, A.A.S. in travel and tourism operations, is owner of Trippin with Crystal's Travel, LLC. "Attending Central Penn was one of the best decisions that I have made in my career," says Crumlic. "Right after I graduated I began my own travel business. I gave myself three years to achieve my goal to retire from my full-time job and establish my travel business full time. Well this December I will be making this dream a reality." Crumlic resides in Enola, Pa. trippinwcrystalstravel@live.com



Crystal Crumlic '12

Brandi Neff '12, B.S. in criminal justice administration, is a program specialist (prevocational) at Shadowfax Corporation. Neff was the recipient of an alumni prize pack for submitting her information via the 'Let Us Know!' form. She resides in New Cumberland, Pa. brandi.neff@gmail.com

Brett Rudder '12, B.S. in homeland security management, is a marketing/social media assistant at Banner of Truth Trust. He resides in Mount Holly Springs, Pa.



Brian Wade '12 with his wife, Cailin

Brian Wade '12, B.S. in accounting, is a corporate accountant at Select Medical. "I have kept busy since graduating in December of 2012. "I love my job. I am thankful for my time at Central Penn College where I had the best accounting

professor, JoAnne Weaver. I am looking to continue my education and am going after a master's degree within the next few months. I hope all of my fellow alumni and current students enjoyed their Central Penn experience as much as I did." He resides in Mechanicsburg, Pa. bwade1276@aol.com

Nashua Volquez '12, A.A.S. in medical assisting, is a youth health counselor for the New York City Board of Education. She is currently studying a B.A. in sociology with a concentration in public health and urban issues. Volquez is engaged to be married in April 2016, and resides in Bronx, N.Y. nashuavolquez@gmail.com



Nashua Volquez '12

Elizabeth Pham '13, B.S. in criminal justice administration, is a blended case manager at CMU. She resides in Harrisburg, Pa. elizabeth.pham@mymail.centralpenn.edu

Alicia Santore '13, B.S. in business administration, is a benefit system analyst at Geisinger Health Plan. She resides in Danville, Pa. collinsmommy18@hotmail.com

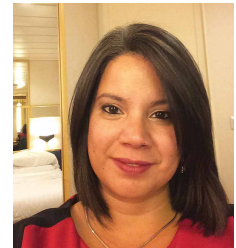
Kaitlyn Edwards '13, B.S. in business administration – finance, is a human resources contract center specialist II at Susquehanna Bancshare, Inc. She resides in Gap, Pa. kaitlyn.g.edwards@gmail.com

Shaun Dickmyer '13, B.S. in criminal justice administration, works as a police officer for Lower Windsor Township. He says he is "enjoying the benefits of his degree" and resides in York, Pa. sdickmyer@lowerwindsor.com

Roger Rudolph '13, B.S. in business administration, is marketing and business development manager at Surtech Industries. He resides in Mountville, Pa.

Joshua Williams '13, B.S. in information technology, is a software quality assurance specialist with the Commonwealth of Pennsylvania. He resides in Mechanicsburg, Pa.

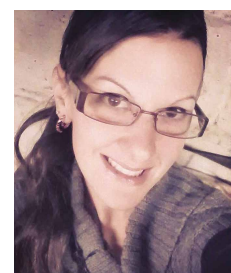
Betty Arocho '14, B.S. in business administration, is an employment specialist at Continental Cooperative Services. She resides in Harrisburg, Pa. bbarocho@gmail.com



Betty Arocho '14

Robbi-Ann Cook '14, B.S. in business administration, is an association executive at the Pennsylvania Medical Society. She resides in Middletown, Pa. robbicook@comcast.net

Robert Hoogenboom '14, B.S. in accounting, is an audit associate at BDO USA. He resides in New York, N.Y.



Lindsey Klobchar '14

Lindsey (Usher) Klobchar '14, B.S. in criminal justice administration, is therapeutic staff support at the Friendship House. She resides in Scranton, Pa. lindseyklobchar2013@gmail.com

Christal Lewis '14, B.S. in accounting, is an escrow coordinator at Title Forward. She shares, "I got a job within my field within 5 months!" Lewis resides in Philadelphia, Pa. v.lewis98@gmail.com

CLASS Notes

Zoe Martens '14, A.A.S. in occupational therapy assistant, is a COTA at Arnot Health. She resides in Wellsboro, Pa. ztmartens@gmail.com

Shelbi Kinard '14, A.A.S. in physical therapist assistant, is a physical therapist assistant at Orthopedic and Spine Specialists and was engaged on December 2, 2014. She resides in Seven Valleys, Pa.

Todd Michaels '14, B.S. in business administration – finance, is an accounting assistant at WITF Public Media. He resides in York, Pa.

Ruth Sam '14, A.A.S. in physical therapist assistant, is a physical therapist assistant at Advantage Physical Therapy. She resides in York, Pa.

Marlee Blose '15, B.S. in business administration, is a medicare appeals technical assistant at Novitas Solutions, Inc. She resides in Enola, Pa.

Lisa Guzman '15, B.S. in business administration, is a customer service representative at Reboot Marketing. She resides in Colorado Springs, Col.

LOCAL LEADER LECTURE SERIES

"How to **change** the world from your own backyard"

Four times per year from 12:10-1:10 p.m. in the Capital BlueCross Theatre
All are welcome! Enjoy snacks and refreshments.
A scholarship will be presented by the Education Foundation at each event.

Sponsored by



A 501 (C) (3) ORGANIZATION



KNIGHT NATION FANS!

Cheer on the teams!
Visit centralpennknights.com
for upcoming games.

Baseball – Spring/Summer
Soccer – Summer/Fall
Volleyball – Summer/Fall
Basketball – Fall/Winter

Social, Cultural & Professional Events

Local Leader Lecture Series

The Capital BlueCross Theatre at Central Penn College
 Joyce Davis, Director of Communications for the City of Harrisburg
 Wed., Oct. 14 • 12:10-1:10 p.m.

Haunted Bus Trip to Eastern State Penitentiary

Sponsored by the Central Penn Alumni Association
 Sat., Oct. 17 • 3:30 p.m.

Homecoming Weekend (Oct. 23-24)

Central Penn College — Summerdale Campus
 Fri., Oct. 23

Golden Graduate Reunion • 2-5 p.m.

1960s and prior alumni

Sat., Oct. 24

Central Penn Noble Knights 5K • 8-10 a.m.

Held at Adams Ricci Park

Fall Harvest • 10 a.m.-2:30 p.m.

Free community festival

Alumni Feast & Brews Reunion Tent • 11:30 a.m.-2:30 p.m.

Live entertainment, all-you-can-eat Oktoberfest fare,
 premium beer/wine

Admission: \$15 lunch ticket; \$20 lunch/drink ticket; \$7 children

Soccer Games • 3 p.m.

Held at East Pennsboro High School

Fall Career Expo

Central Penn College — Summerdale Campus
 Thurs., Oct. 29 • 9:30 a.m.-12:30 p.m.

Central Penn Alumni Association Meeting

Central Penn College — Summerdale Campus
 Wed., Nov. 4 • 5:30 p.m.

Lancaster Fall Job Fair

Central Penn College — Lancaster Center
 Thurs., Nov. 12 • 4-7 p.m.

Bus Trip to New York City

Sponsored by the Central Penn Alumni Association
 Sat., Nov. 14 • 7 a.m.

Dr. Jekyll and Mr. Hyde

The Capital BlueCross Theatre at Central Penn College
 Play adapted by Jeffery Hatcher, from the novella Strange Case of Dr.
 Jekyll and Mr. Hyde by Robert Louis Stevenson

Thurs. – Fri., Nov. 19 – 20

Admission: \$7

Local Leader Lecture Series

The Capital BlueCross Theatre at Central Penn College

Dr. Karen M. Scolforo, President

Wed., Feb. 10, 2016 • 12:10-1:10 p.m.

CPEC Job & Internship Fair

Radisson Hotel Harrisburg, Camp Hill, Pa.
 Tues., Feb. 2016

Returning Student/Enrollment Events

Central Penn College — Summerdale Campus

Discovery Day for High School Students

Oct. 21 | Jan. 27, 2016

Open House for High School Students

Nov. 7

Occupational Therapist Assistant Visit Day for High School Students

Dec. 2

1-2-3 Enrollment Workshop

For students interested in continuing their education

Dec. 3 | Mar. 9, 2016

Second Saturday Interview Visit Day

Provides students the opportunity to complete the admissions interview
 requirement on a Saturday

Dec. 12 | Feb. 13, 2016

Graduate Degree Information Session

Feb. 3, 2016

Physical Therapist Assistant Visit Day

Summerdale and Lancaster

Feb. 10, 2016

Spring Open House

Mar. 5, 2016

To learn more about any of these events, visit centralpenn.edu/events

Charlotte Lucille Horst Chryst '41 died Sun., Jan. 25, 2015, at age 92.

Shirley R. Fralick died Fri., Mar. 20, 2015, at age 88.

Mary Katherine (Shaul) Holder '21 died Sun., Apr. 26, 2015, at age 93.

Rene V. Kirk '78, data processing, died Tues., Apr. 14, 2015, at age 55.

Jean E. (Seiler) Oxenrider died Sat., Apr. 18, 2015, at age 84.

Danielle E. Pauling '02, A.S. in paralegal and '08, B.S. in criminal justice administration, died Tues., May 26, 2015, at age 33.

Lillian (Robison) Pipp '36, accounting, died Tues., May 26, 2015, at age 97.

Mabel E. (Bates) Weigel died Mon., Mar. 30, 2015, at age 97.

Lillian S. Ulrich, former instructor, died Sun., Apr. 26, 2015, at age 87.



Let us know!

We want to know about any changes or other exciting news that you would like to share with classmates. Include a business card and/or recent photo to give it that special touch. For quality reproduction, all photos must be originals and unmarked. Electronic submissions should be at least 300 dpi and a JPEG file. You can also share updates and upload photos online by visiting centralpenn.edu/letusknow.

Name: _____ (Maiden) _____

Phone: _____

Address: _____

City: _____ State: _____ Zip: _____

E-mail Address: _____

Graduation Year: _____ Major: _____

Employer: _____

Title: _____

Your news/special memories: _____

May we print your e-mail address with your comments? Yes No

May we use your comments on other publications for the College? Yes No


Would you be interested in more information on: Alumni Association Alumni Mentor Program Reunions (Attending Planning)
 Planned Giving

We use several sources to gather information for Class Notes. If you prefer not to have information about you appear in *PennDulum*, please let us know by checking this box.

IMPORTANT NOTICE FOR ALUMNI WISHING TO CHANGE THEIR NAME

Alumni who want to officially change their name in the college database must contact one of the below offices to complete this request.

- **Records and Registration**
717-728-2229
- **Alumni Engagement**
717-728-2295
- **Career Services**
717-728-2262



As an alum of Central Penn
College, you could receive
exclusive savings on auto and
home insurance from Liberty
Mutual.¹

Join thousands of satisfied customers with
Liberty Mutual Insurance.²



Discounted Rates—You could save up to \$427.96 a year³ on auto insurance and receive additional discounts on home insurance.



Exceptional Service—Whether you're in an accident or just need some advice, know we'll always be on call for you.



Superior Benefits—Enjoy a number of superior benefits, such as 24-Hour Claims Assistance, Accident Forgiveness⁴, Roadside Assistance⁵ and Better Car Replacement.^{TM6}



Liberty Mutual
INSURANCE



For a free quote, call 1-800-524-9400
Client # 117331

This organization receives financial support for offering this auto and home benefits program.

¹ Discounts and savings are available where state laws and regulations allow, and may vary by state. To the extent permitted by law, applicants are individually underwritten; not all applicants may qualify. ² Based on Liberty Mutual Insurance Company's 2013 Customer Satisfaction Survey in which more than 85% of policyholders reported their interaction with Liberty Mutual service representatives to be "among the best experiences" and "better than average." ³ Figure reflects average national savings for customers who switched to Liberty Mutual's group auto and home program. Based on data collected between 9/1/12 and 8/31/13. Individual premiums and savings will vary. ⁴ For qualifying customers only. Accident Forgiveness is subject to terms and conditions of Liberty Mutual's underwriting guidelines. Not available in CA and may vary by state. ⁵ With the purchase of optional Towing & Labor coverage. Applies to mechanical breakdowns and disablements only. Towing related to accidents would be covered under your Collision or Other Than Collision coverage. ⁶ Optional coverage. Applies to a covered total loss. Deductible applies. Does not apply to leased vehicles and motorcycles. Not available in NC.

Coverage provided and underwritten by Liberty Mutual Insurance and its affiliates, 175 Berkeley Street, Boston, MA 02116.

©2015 Liberty Mutual Insurance

Central Penn College
Education Foundation
600 Valley Road
P.O. Box 309
Summerdale, PA 17093-0309

NON PROFIT ORG
U.S. Postage
PAID
Harrisburg, PA
Permit No. 668

ADDRESS SERVICE REQUESTED

MISSION

Central Penn College will provide a quality education that prepares its graduates for employment or advancement in their field, and/or the pursuit of advanced degrees.

VISION

Central Penn College strives to provide a dynamic and innovative student experience, expand our role in workforce development through increased community partnerships, promote global access to our quality education, increase diversity among our members, and ensure that program offerings are progressive and relevant.

CORE VALUES

Integrity
Quality
Professionalism
Diversity
Service

